

In this month's Issue:

November invitation:
'Sculpting as Dialogue'
front page

November Meeting
directions & RSVP
page 2

October Meeting
Summary &
Letter from London
page 3

APC 2007 – 2008
Schedule *updated*
page 4

Board & Contacts
page 5



Our next APC meeting comes to you in the form of an invitation, something a little different from our normal meetings...quite exciting! – details on page 1. Please note the RSVP to the invite. We've updated the 07/08 schedule which I've highlighted on page 3. I'll just mention here that we've had some exciting discussions / ideas arise from our 'new member' appeals – hopefully more on this in forthcoming newsletters.

That's it for this month – any comments / suggestions; let me know.

Sculpting as Dialogue

Dear APC Member

You are invited to a talking/walking tour with Lynn Alicia Franco, Jungian Analyst and Sculptor and Deborah Hoch, Artist and Teacher,

When: November 11, 2007 from 2pm to 4pm.

Where: at the home/gallery/studio of Lynn Alicia Franco. (*directions on page 2*)

Sculpting as Dialogue: Exploring the Significance of Relationship in Art Making

In company and dialogue with my mentor, Deborah Hoch, I will walk you through my home-gallery/garden and studio, showing you my sculptures. As we tour I will describe how an authentic non-verbal dialogue emerges as I sculpt. Deborah and I will engage in an open conversation with you regarding how I "speak through clay" and how she held a space for this discovery. We hope that our dialogue will engage you in a discussion regarding the process and elements helpful in the development of one's creative self.

For me sculpting expresses an internal dialogue that reveals me to myself, while the piece itself becomes subject and I become object. Art-making is a relational process. The temenos initially held by my teacher supported my participation in an active, internal, nonverbal dialogue, which allowed the aesthetic to range free without obligations, contingencies, or interference. The forms I shape create their own aesthetic gesture as if demanding a dialectic exchange. The artistic crucible holds the tensions between inspiration and execution, vision and skill, freedom and limitation. Each engagement is a risk for me; learning, ingenuity, flexibility and humor are demanded of me. My

experience of art making requires confrontation and change —a constant becoming which shows me my own essential idiomatic quality of being.

Lynn Alicia Franco is a Jungian Analyst, certified by the C.G. Jung Institute of San Francisco. She has been in private practice since 1977, in Berkeley. Before becoming a Licensed Clinical Social Worker, she was a bilingual high school history and government teacher for San Francisco Unified Schools.

Deborah Hoch is a sculptor and teacher. She received a BFA in Sculpture from the San Francisco Art Institute in 1986. In addition to pursuing the life of a working artist, she is a teacher to adults and children in her own studio and numerous Bay Area art institutions, including the San Francisco public schools.

Directions:

Address and telephone:

2935 Elmwood Court, Berkeley, California, 94705
Telephones: office, 510-848-3939; home, 510-548-2500

From San Francisco:

- After crossing on the Bay Bridge, stay to the right, and take 24 toward Walnut Creek.
- Exit at Claremont Blvd. and make a left hand turn on to Claremont.
- Go northeast on Claremont past four stoplights until you come to Ashby.
- Turn left (west) on Ashby, for two blocks and turn left on Elmwood Ct.
- It will be the 2nd house on the left; a yellow, stucco house with a redwood in front.

From the north and the south:

- Take 880 or 580 to 24 and follow the same directions as above.
- Or exit on Ashby and go east, past College Avenue for six blocks, and then turn right on to Elmwood Ct., which is a cul-de-sac.

From the east:

- Take hwy 24 west to hwy 13 to Tunnel Rd. West (which becomes Ashby).
- After crossing Claremont Blvd. continue for two blocks (west) and turn left on Elmwood Court, to 2nd house on the left.

Please **RSVP** by Thursday November 8, so we will know roughly how many members and guests to expect:

By email: neville_anthony_powers@yahoo.com

Or by mail to: Neville Powers
1678 Varni Ct.
Benicia, CA 94510

Or by phone: (510) 390-3238

APC members are once again encouraged to bring guests to our monthly meeting. Gerane Park represents the Board in managing club outreach; should you have any suggestions to promote our meetings – ideas for making this group interesting to a wider variety of people that espouse Jungian thought, please do contact Gerane (gwparklcsw@sbcglobal.net).



Large glass retort, hermetically sealed and crowned, in ornamented niche; youthful crowned king within vessel, dressed in red and gold, holding golden ball in left hand, sceptre in right, standing within radiating aureole upon inverted crescent moon; above, robed female figure, holding human-faced crescent moon, concave side up, sitting in chariot drawn by two female figures robed in red and gold, sign of Scorpio on wheel (Moon in Scorpio); outside niche, river with water birds on surface, around which are men hawking, shooting, fishing with rod, casting nets from boat, women washing clothes, scenes of hunting, riding, boating, sailing in distance. Seventhly: Is the Force of the heat thus mixed with heat in the earth, that it has made light the collected parts and resolved them so as to surpass the other elements, and therefore this heat shall be modified with the Coldness of the Moon, "Extinguish the Fire of one thing with the Coldness of another" says Calid.

© ARAS

Our last meeting – 'Visions of the Emerging Dark Feminine'

Presented by Norma Churchill Sunday, October 14th 2007

Many thanks to Norma Churchill for a very fluent and engaging presentation of slides and text based on her paintings and psychological-memoir article titled: 'Wounded Heart, Golden Serpent: Visions of the Dark Feminine' in the Winter 2007 Jung Journal, to an audience of seventeen members and guests. After some discussion we then enjoyed social time over sherry, walnuts, cookies and sweets.

For further information on this interesting presentation and Norma's paintings, I refer the reader to the Jung Journal, Winter & Spring 2007, Volume I, Numbers 1&2.

Letter from London



Greetings!

What a busy time it's been here in the UK. The MA course is well and truly underway, and most interesting it is too. The class is quite small, 11 fulltime students in total. The full time course lasts one year.

Subsequently all classes are presented in the manner of a seminar – or APC-SF meeting style if you will ☺ ; presentations followed by discussion. There are some interesting folk in the class as well, from all over the world. We have Italian, Swedish, Romanian (apparently Dracula is a fictional character, something I was most disappointed to discover), Swedish, British, South African (myself), a Greek Orthodox Monk (wears a lot of black), and bringing in the US contingent is a lady from LA. The diversity makes for some very interesting and enlightening conversations!

The course is focused primarily around two areas: Context and Concepts. The names speak for themselves I guess. We discuss Jung and the evolution of Analytical Psychology, the influences of his time and the post-Jungian era in the context class. The concepts course is presented by a different (and often visiting) lecturer each week, discussing one particular aspect of Analytical Psychology – for example; last week we discussed 'Individuation', and this week it's the 'Imaginal Field' presented by Andrew Samuels.

There is always too much reading to do, and fortunately the English (wet) weather makes it convenient to stay indoors with the occasional quick dash from class to library! Just a short letter this month – I'd be happy to answer any comments / questions ☺

anton

APC Calendar 2007 – 2008

Sunday, September 9, 2007

'The Female Trickster', presented by Ricki Tannen

- ◆ Board Meeting at 12 Noon

Sunday, October 14, 2007

'Visions of the Emerging Dark Feminine', presented by Norma Churchill

- ◆ Board Meeting at 12 Noon

Sunday, November 11, 2007

Lynn Franco: a visit to Lynn Franco's ceramics studio in Berkeley

- ◆ No Board Meeting this month **update**

Sunday, December 9, 2007:

No Meeting

Sunday, Jan 13, 2008

'What Myth am I living?', presented by Maureen Murdock

- ◆ Board Meeting at 12 Noon **updated**

Sunday, Feb 10, 2008 **updated**

'Objective Dreams', presented by Meredith Sabini
at Fox Commons, 1670 University Ave., Berkeley

Sunday, March 9, 2008

To be confirmed

Sunday, April 13, 2008

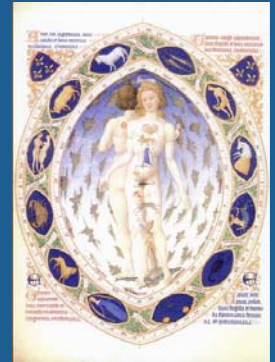
To be confirmed

Sunday, May 11, 2008

No Meeting

Sunday June 1, 2008

Picnic



Within mandorla, Zodiac Man, nude, facing viewer with zodiac signs on body: Aries on head, Taurus at neck, Gemini (man and woman) on arms, Cancer on breast, Leo at heart, Virgo at solar plexus, Libra at abdomen, Scorpio at groins, Sagittarius at thighs, Capricorn at knees, Aquarius at legs, and Pisces at feet; behind Zodiac Man mirror-like image of nude man facing away from beholder; clouds floating about them; in band of mandorla, twelve zodiac signs.

The miniature claims to show the influences of the zodiacal stars on the human body...Such categories were held dear in the Middle Ages. Two figures standing back to back illustrate these categories. The frontal figure is slenderer and obviously represents the feminine character; the figure seen from the back and only in part is more vigorous, representing the masculine character. One is blond, the other is dark in contrast.

APC-SF

2411 Octavia #1
San Francisco
CA 94109

For More
Information:
Judith Loveless
Tel: 415-643-1227
Email:
judith@jcldesign.net

APC-SF Board 2007 - 2008

Recording Secretary: Ruth Foster
925-939-9115

Newsletter Editor: Anton Gething
415-306-1423
anton@gething.com

Corresponding Secretary: Gabrielle Guedet
916-422-1476
drgabrielle@prodigy.net

Director without Office: Ruth Hill
510-843-2058
ruthcobbhill@comcast.net

Membership: Judith Loveless
415-643-1227
judith@jcldesign.net

Librarian: Cynthia Miranda
707-568-1302
cmir2001@aol.com

Outreach: Gerane Park
707-224-8661
gwparklcsw@sbcglobal.net

Treasurer: Nancy Poole
209-293-7578
ndepoole@volcano.net

Program Director & Newsletter
Associate: Neville Powers
510-390-3238
neville_anthony_powers@yahoo.com